

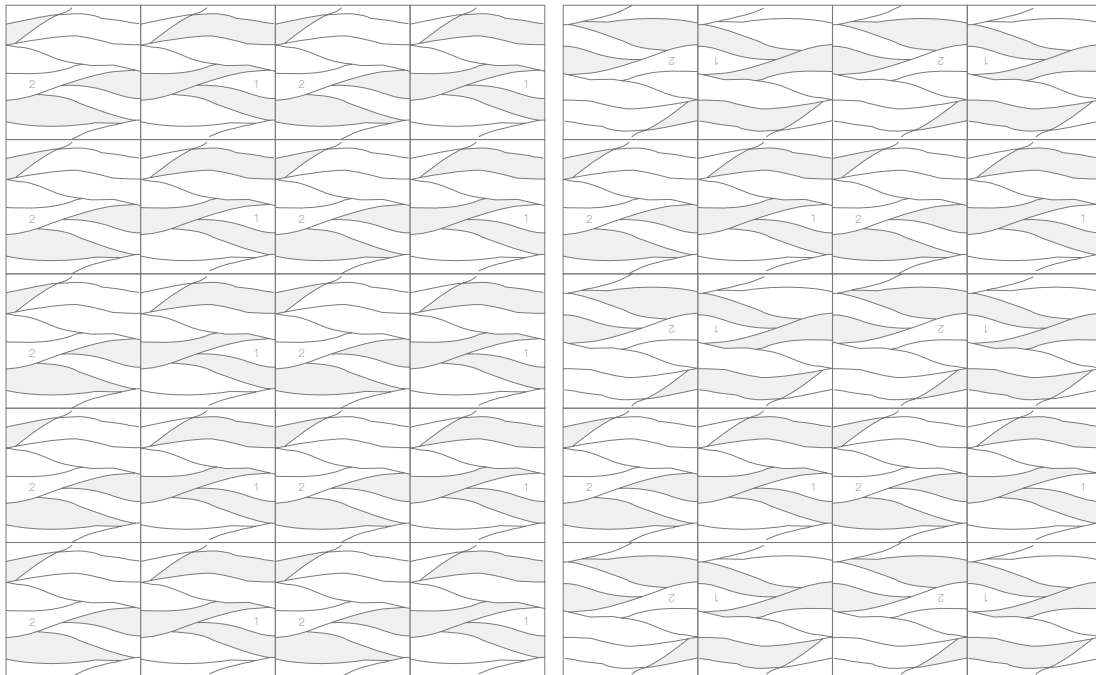
AMBRA

Hand carved by artisans to fit seamlessly into the Ambra pattern, each stone undergoes a unique, time intensive process that both hones and polishes the stone, leaving a three dimensional relief. Evocative of flames roaring across a canvas or waves flowing atop a pond, Ambra brings the beauty and power of the elements to your walls. Precision designed for modern installations, Ambra is calibrated to $\frac{3}{8}$ " thickness to ensure compatibility with your design.



AMBRA

INSTALLATION OPTIONS



Standard Repeat

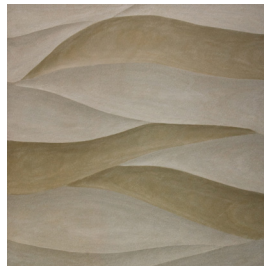
Rotated Repeat



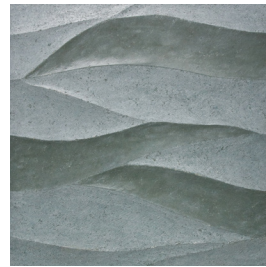
Bianco Carrara
Mixed Finish



Gris
Mixed Finish



Moss Green¹
Mixed Finish



Lake Blue
Mixed Finish



Noir²
Mixed Finish

APPLICATIONS							
INTERIOR FLOOR	INTERIOR WALL	SHOWER WALL	SHOWER FLOOR	EXTERIOR FLOOR	EXTERIOR WALL	POOL/ FOUNTAIN	COUNTER TOP
No	All	Yes, including steam	No	No	Yes, non-freeze thaw	No	No

VARIATION ¹			
V1	V2	V3	V4

INSTALLATION/MAINTENANCE									
SETTING MATERIAL	GROUT	GROUT JOINT	MEMBRANE	CAULK	SEALER	CLEANER	INSTALLATION INSTRUCTIONS	LAYOUT	DRY LAYOUT
Mapei Ultraflex LFT White ³	Mapei Ultracolor Plus Sanded	1/8" minimum	Mapei Mapelastic AquaDefense	Mapei Keracaulk Sanded	AquaMix Sealer's Choice Gold ⁴	AquaMix Concentrated Stone & Tile Cleaner	TCNA Handbook	No	Recommended

AVAILABLE SIZES	
SOLD AS A TWO PART UNIT	
DIMENSIONAL FIELD TILE 12" x 12" x 3/8" Bianco Carrara, Gris, Moss Green Lake Blue - Special Order Only 24" x 24" x 5/8" Bianco Carrara, Gris, Lake Blue, Moss Green, Noir	
 1 3/8" x 3 13/16" STRAIGHT JOINT MOSAIC 11 11/16" x 11 11/16" x 3/16" Gris - Special Order Only 12" x 24" and other special order sizes available	

NOTES
¹ Variation - V3 ² Noir is only stocked in 24" x 24" x 3/8". ³ Gris Sandstone must be installed with Mapei Granirapid System. ⁴ Do not use color enhancing products on Ambra. Installation: Do not spot back Ambra. Full and complete mortar coverage from the back of the tile to the substrate is required.