

FIAMMATO

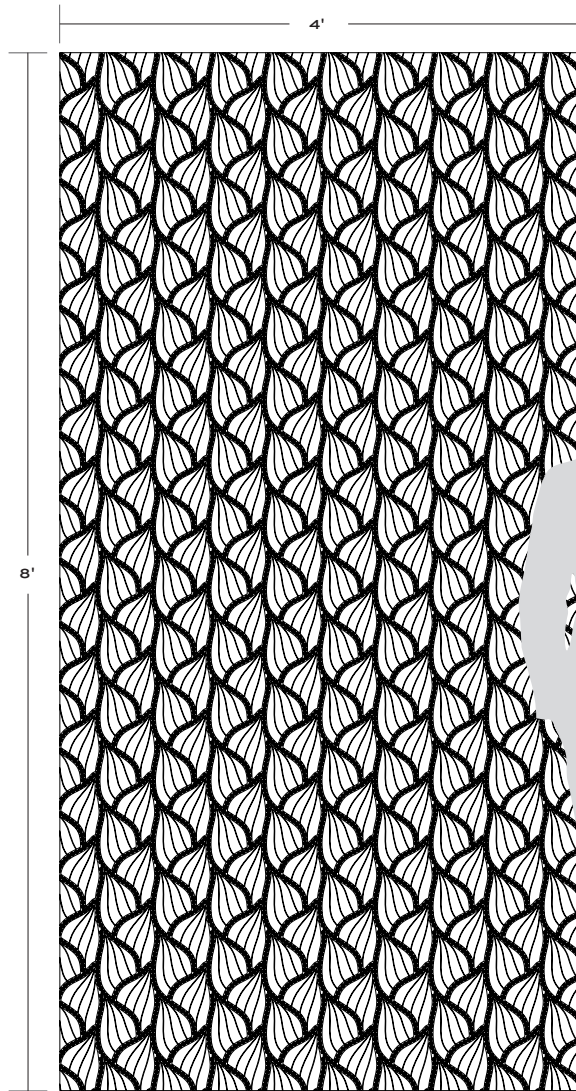
The isle of Murano lies just outside of Venice, and is our founder's favorite location to source art glass for her collection. Muranese artisans have crafted astonishing glasswork for centuries, drawing fabulous forms from the fires of their kilns. Millefiori - a thousand flowers - are a specialty of the Muranese craft - intricate beads encasing floral patterns in hand blown glass. Each bead is formed inside a rod of blown glass, sliced to reveal the floral shape within. We've taken these floral beads and have incorporated them into a glass tile pattern called Fiammato - a unique glass tile pattern 5 years in the making - that blends hand and machine cut glass into a lovely decorative pattern, with beautiful flowing lines and sophisticated, delicate detail.



FIAMMATO



White
Gloss



APPLICATIONS							
INTERIOR FLOOR	INTERIOR WALL	SHOWER WALL	SHOWER FLOOR	EXTERIOR FLOOR	EXTERIOR WALL	POOL/ FOUNTAIN	COUNTER TOP
No	All	Yes, including steam	No	No	No	No	No

VARIATION			
V1	V2	V3	V4

INSTALLATION/MAINTENANCE									
SETTING MATERIAL	GROUT	GROUT JOINT	MEMBRANE	CAULK	SEALER	CLEANER	INSTALLATION INSTRUCTIONS	LAYOUT	DRY LAYOUT
Mapei Adesilex P10/Keraply White ¹	Ardex FG-C Microtec Unsanded ²	As established on sheets	Mapei Mapelastac AquaDefense	Mapei Keracaulk Unsanded	Not Required	AquaMix Concentrated Stone & Tile Cleaner	A.T. Guidelines	Maintain sheet orientation	Required

WATERJET MOSAIC
(0.92 sf/unit) Mesh mounted interlocking sheet 20 x 20 concept board

NOTES

¹ Alternate Mortar - Ardex X77 White or Mapei Kerabond/Keralastic White
Ardex X77 White - Not suitable for metallic colorways or submerged applications

² Alternate Grout - Mapei Keracolor Unsanded or Mapei Flexcolor CQ
Tech Note: Final appearance of installation will be influenced by choice of grout color. Mockup to confirm grout color selection highly recommended.