

# RIVERSTONE

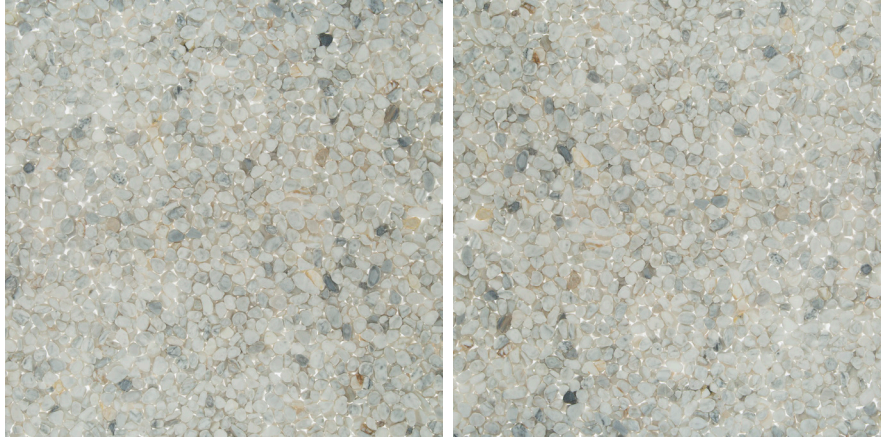
—

Natural stone pebbles shaped like river rocks smoothed and rounded for millennia are suspended in transparent resin to create the beautiful illusion of underwater river pebbles. Riverstone's two blends, Bianco Carrara and Nero Marquina, combine resin and stone, bringing a sleek grey or black effect to life. Now stocked as 24" x 24" field tiles.

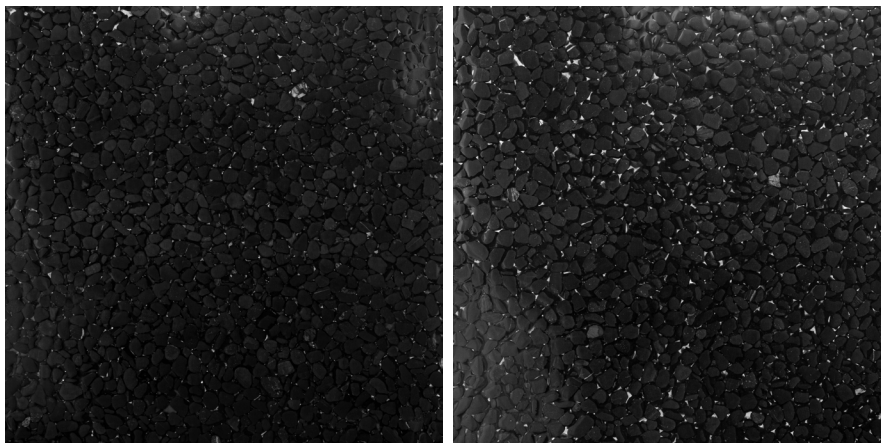




# RIVERSTONE



Bianco Carrara - Polished



Nero Marquina - Polished

APPLICATIONS								ATTRIBUTES		VARIATION	
INTERIOR FLOOR	INTERIOR WALL	SHOWER WALL	SHOWER FLOOR	EXTERIOR FLOOR	EXTERIOR WALL	POOL/ FOUNTAIN	COUNTER TOP	DCOF <sup>2</sup>			
Commercial Light/Medium <sup>1</sup>	All	Yes, including steam	No	No	No	No	Yes	0.42	0.42	0.42	
INSTALLATION/MAINTENANCE										AVAILABLE SIZES	
SETTING MATERIAL	GROUT	GROUT JOINT	MEMBRANE	CAULK	SEALER	CLEANER	INSTALLATION INSTRUCTIONS	LAYOUT	DRY LAYOUT		
Mapei Kerabond w/ Keralastic Additive <sup>3</sup>	Mapei Ultra-color Plus FA <sup>4</sup>	1/16" minimum	Mapei Mapelastic AquaDefense	Mapei Keracaulk Sanded	AquaMix Sealer's Choice Gold	AquaMix Concentrated Stone & Tile Cleaner	TCNA Handbook	No	Required <sup>5</sup>	<p><b>FIELD TILE</b> 24" x 24" x 9/16" Polished</p>	
NOTES											
<sup>1</sup> Nero - Light Residential <sup>2</sup> The standard requires a minimum wet DCOF Acutest value greater than 0.42 for ceramic tiles (inclusive of porcelain) for level interior spaces expected to be walked upon when wet. <sup>3</sup> Alternate Mortar - Mapei Granirapid 2-Part System <sup>4</sup> Alternate Grout - Mapei Flexcolor CQ or Ardex FG-C Microtec Unsanded <sup>5</sup> Layout for color and vein selection before installation Tech Notes: Not suitable for custom cutting - Must be installed with Mapei Kerabond with Keralastic - May yellow in direct sunlight - Resin is subject to visible scratching											